

# KX3 KIT ASSEMBLY MANUAL ERRATA

Rev. G3-1, August 30, 2013

## MAKE THESE CHANGES TO YOUR REV G3 MANUAL BEFORE BEGINNING ASSEMBLY

1. Page 30: Replace the existing text and illustration with the following. You may cut and paste this over the existing text and illustration on the page.

☐ If you have the KXFL3 filter option, install it as shown in Figure 45. The connector is at the opposite end of the RF board from the antenna connector near the shield you installed on the RF board earlier. Be sure the board is oriented as shown and that pin 1 of the KXFL3 board is in the connector hole closest to the end of the KX3. Note that three holes in the female connector are not used. The KXFL3 board has only 9 pins. The new, longer screw through the bottom cover and heat sink does not make electrical contact with the hole in the KXFL3 board. It is there to ensure the board cannot be dislodged by rough handling of the KX3. If the screw strikes the board instead of entering the hole, you have the KXFL3 plugged in incorrectly.

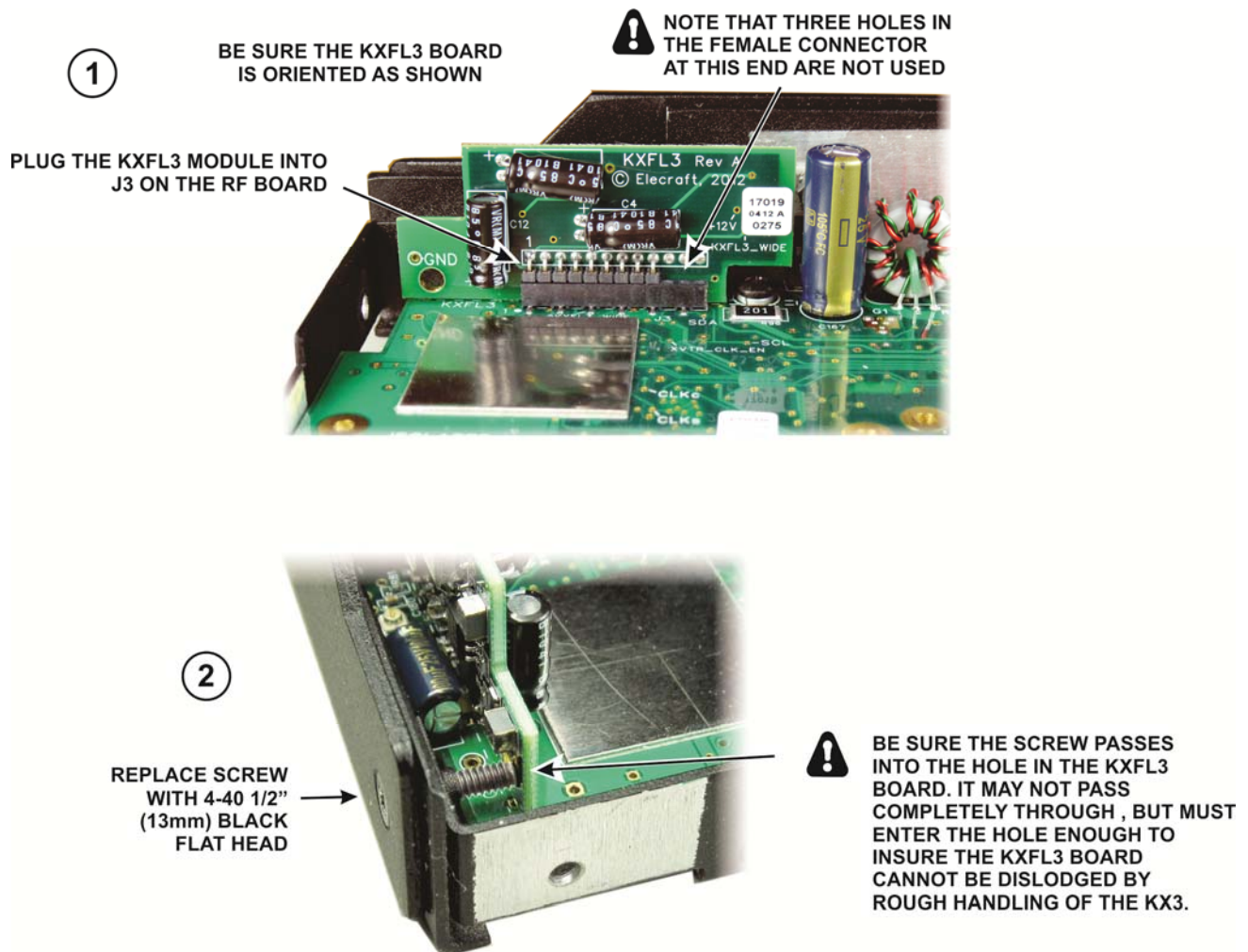


Figure 45. Installing the KXFL3.